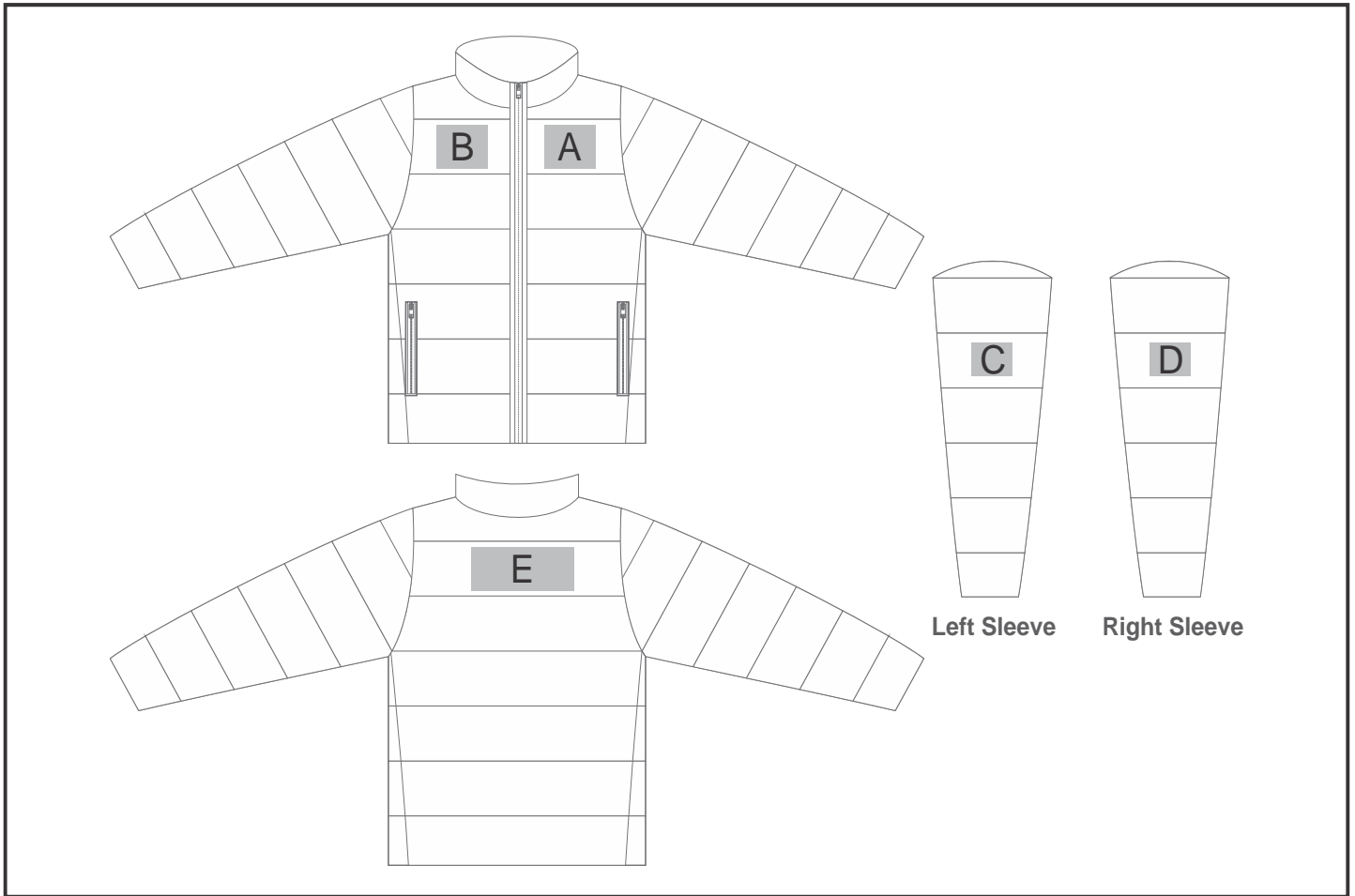


JC-AL-148-A

Mens Catania Jacket



Need to know:

Includes 1-Position Embroidery (setup fees apply)

- **EMB Inclusive Parameters:** Left/Right Chest or Back = 100mm x 100mm

Branding Options:

Position	Branding Method (Branding Code)	No. of Colours	Dimension
A	Embroidery (EM-CLOTHING)	N/A	100mm wide x 80mm high
B	Embroidery (EM-CLOTHING)	N/A	100mm wide x 80mm high
C	Embroidery (EM-CLOTHING)	N/A	80mm wide x 60mm high
D	Embroidery (EM-CLOTHING)	N/A	80mm wide x 60mm high
E	Embroidery (EM-CLOTHING)	N/A	200mm wide x 80mm high