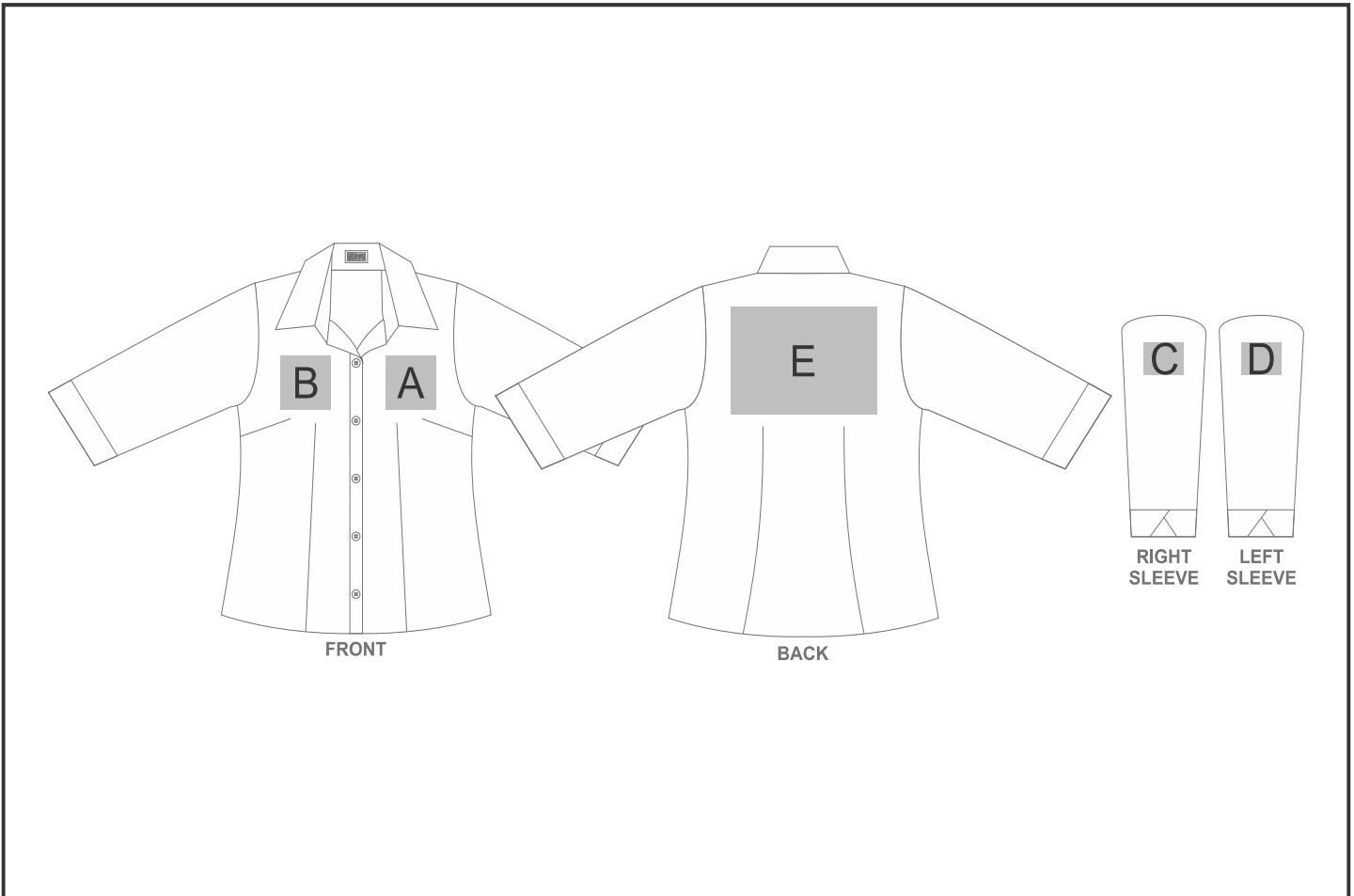


CW-UB-200-A

Ladies 3/4 Sleeve Ashford Shirt



Need to know:

Includes 1-Position Embroidery or 1-Position Digital Transfer (setup fees apply)

- **DTC/EMB Inclusive Parameters:** Left/Right Chest or Back = 100mm x 100mm

- Cannot guarantee a 100% straight branding on any clothing item with check or stripe detail

Branding Options:

Position	Branding Method (Branding Code)	No. of Colours	Dimension
A	Embroidery (EM-CLOTHING)	N/A	100mm wide x 100mm high
A	Screen Print (SA)	3 Colours	100mm wide x 100mm high
A	Digital Transfer Clothing A6 (DTC-A6)	Full Colour	100mm wide x 100mm high
B	Embroidery (EM-CLOTHING)	N/A	100mm wide x 100mm high
B	Screen Print (SA)	3 Colours	100mm wide x 100mm high
B	Digital Transfer Clothing A6 (DTC-A6)	Full Colour	100mm wide x 100mm high
C	Embroidery (EM-CLOTHING)	N/A	80mm wide x 60mm high

C	Screen Print (SA)	3 Colours	60mm wide x 60mm high
C	Digital Transfer Clothing A6 (DTC-A6)	Full Colour	80mm wide x 80mm high

D	Embroidery (EM-CLOTHING)	N/A	80mm wide x 60mm high
D	Screen Print (SA)	3 Colours	60mm wide x 60mm high
D	Digital Transfer Clothing A6 (DTC-A6)	Full Colour	80mm wide x 80mm high

E	Embroidery (EM-CLOTHING)	N/A	200mm wide x 200mm high
E	Screen Print (SA)	3 Colours	260mm wide x 200mm high
E	Digital Transfer Clothing A6 (DTC-A6)	Full Colour	148mm wide x 105mm high
E	Digital Transfer Clothing A5 (DTC-A5)	Full Colour	148mm wide x 210mm high
E	Digital Transfer Clothing A4 (DTC-A4)	Full Colour	200mm wide x 290mm high