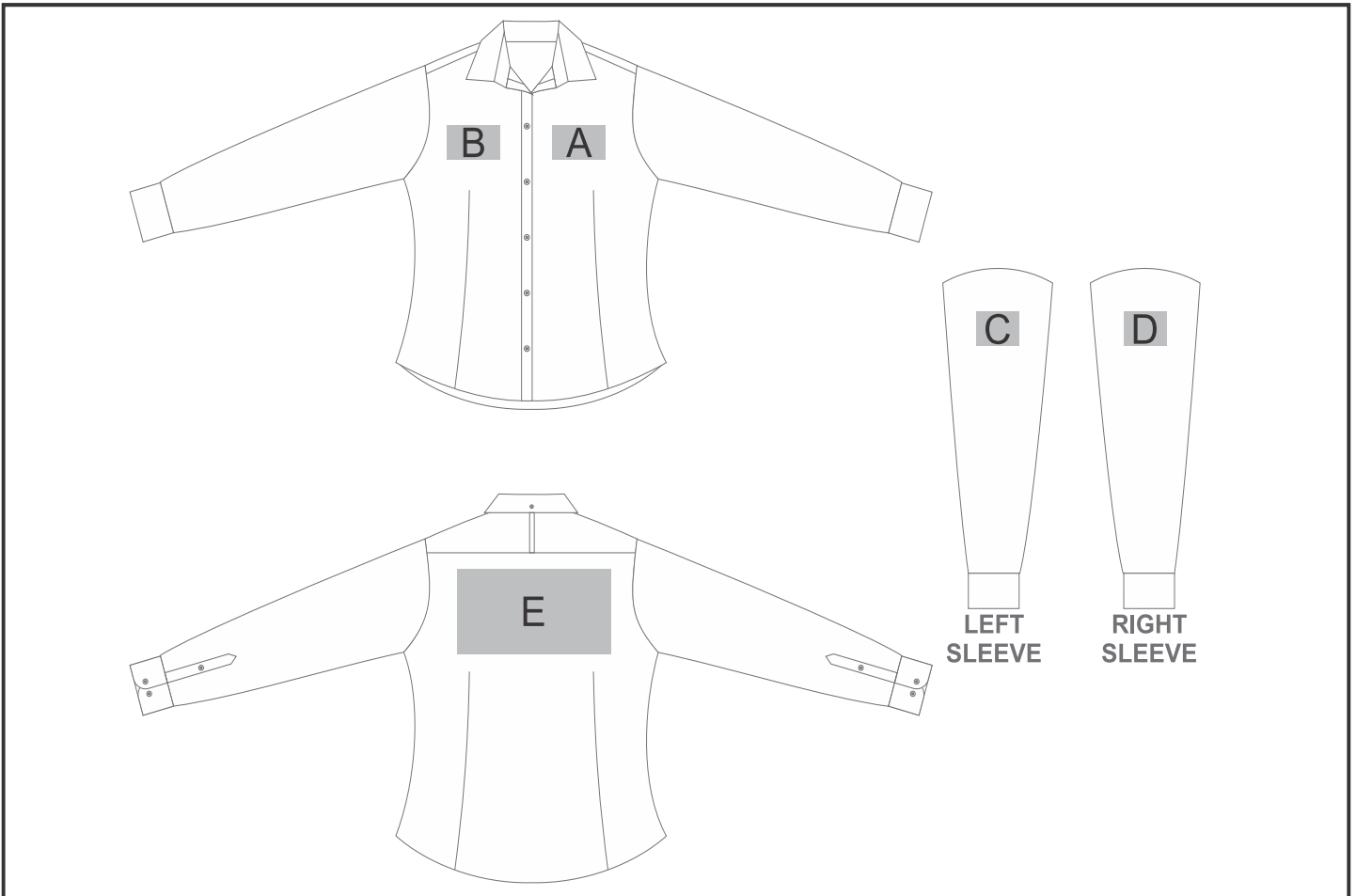


# CW-UB-192-A

## Ladies Long Sleeve Sheffield Stretch Shirt



### Need to know:

Includes 1-Position Digital Transfer (setup fees apply)

- **DTC Inclusive Parameters:** Left/Right Chest or Back = 100mm x 100mm

### Branding Options:

| Position | Branding Method (Branding Code)       | No. of Colours | Dimension              |
|----------|---------------------------------------|----------------|------------------------|
| A        | Embroidery (EM-CLOTHING)              | N/A            | 80mm wide x 100mm high |
| A        | Digital Transfer Clothing A6 (DTC-A6) | Full Colour    | 80mm wide x 80mm high  |
| A        | Silicone (STP-A)                      | N/A            | 30mm wide x 30mm high  |
| A        | Silicone (STP-B)                      | N/A            | 50mm wide x 50mm high  |
| A        | Silicone (STP-C)                      | N/A            | 80mm wide x 60mm high  |
| A        | Silicone (STP-D)                      | N/A            | 100mm wide x 60mm high |

|   |                                       |             |                        |
|---|---------------------------------------|-------------|------------------------|
| B | Embroidery (EM-CLOTHING)              | N/A         | 80mm wide x 100mm high |
| B | Digital Transfer Clothing A6 (DTC-A6) | Full Colour | 80mm wide x 80mm high  |

|   |                  |     |                        |
|---|------------------|-----|------------------------|
| B | Silicone (STP-A) | N/A | 30mm wide x 30mm high  |
| B | Silicone (STP-B) | N/A | 50mm wide x 50mm high  |
| B | Silicone (STP-C) | N/A | 80mm wide x 80mm high  |
| B | Silicone (STP-D) | N/A | 100mm wide x 40mm high |

|   |                                       |             |                       |
|---|---------------------------------------|-------------|-----------------------|
| C | Embroidery (EM-CLOTHING)              | N/A         | 80mm wide x 60mm high |
| C | Digital Transfer Clothing A6 (DTC-A6) | Full Colour | 80mm wide x 80mm high |
| C | Silicone (STP-A)                      | N/A         | 30mm wide x 30mm high |
| C | Silicone (STP-B)                      | N/A         | 50mm wide x 50mm high |

|   |                                       |             |                       |
|---|---------------------------------------|-------------|-----------------------|
| D | Embroidery (EM-CLOTHING)              | N/A         | 80mm wide x 60mm high |
| D | Digital Transfer Clothing A6 (DTC-A6) | Full Colour | 80mm wide x 80mm high |
| D | Silicone (STP-A)                      | N/A         | 30mm wide x 30mm high |
| D | Silicone (STP-B)                      | N/A         | 50mm wide x 50mm high |

|   |                                       |             |                         |
|---|---------------------------------------|-------------|-------------------------|
| E | Embroidery (EM-CLOTHING)              | N/A         | 200mm wide x 200mm high |
| E | Digital Transfer Clothing A6 (DTC-A6) | Full Colour | 148mm wide x 105mm high |
| E | Digital Transfer Clothing A5 (DTC-A5) | Full Colour | 148mm wide x 210mm high |
| E | Digital Transfer Clothing A4 (DTC-A4) | Full Colour | 140mm wide x 290mm high |
| E | Silicone (STP-A)                      | Full Colour | 30mm wide x 30mm high   |
| E | Silicone (STP-B)                      | N/A         | 50mm wide x 50mm high   |
| E | Silicone (STP-C)                      | N/A         | 80mm wide x 80mm high   |
| E | Silicone (STP-D)                      | N/A         | 100mm wide x 40mm high  |