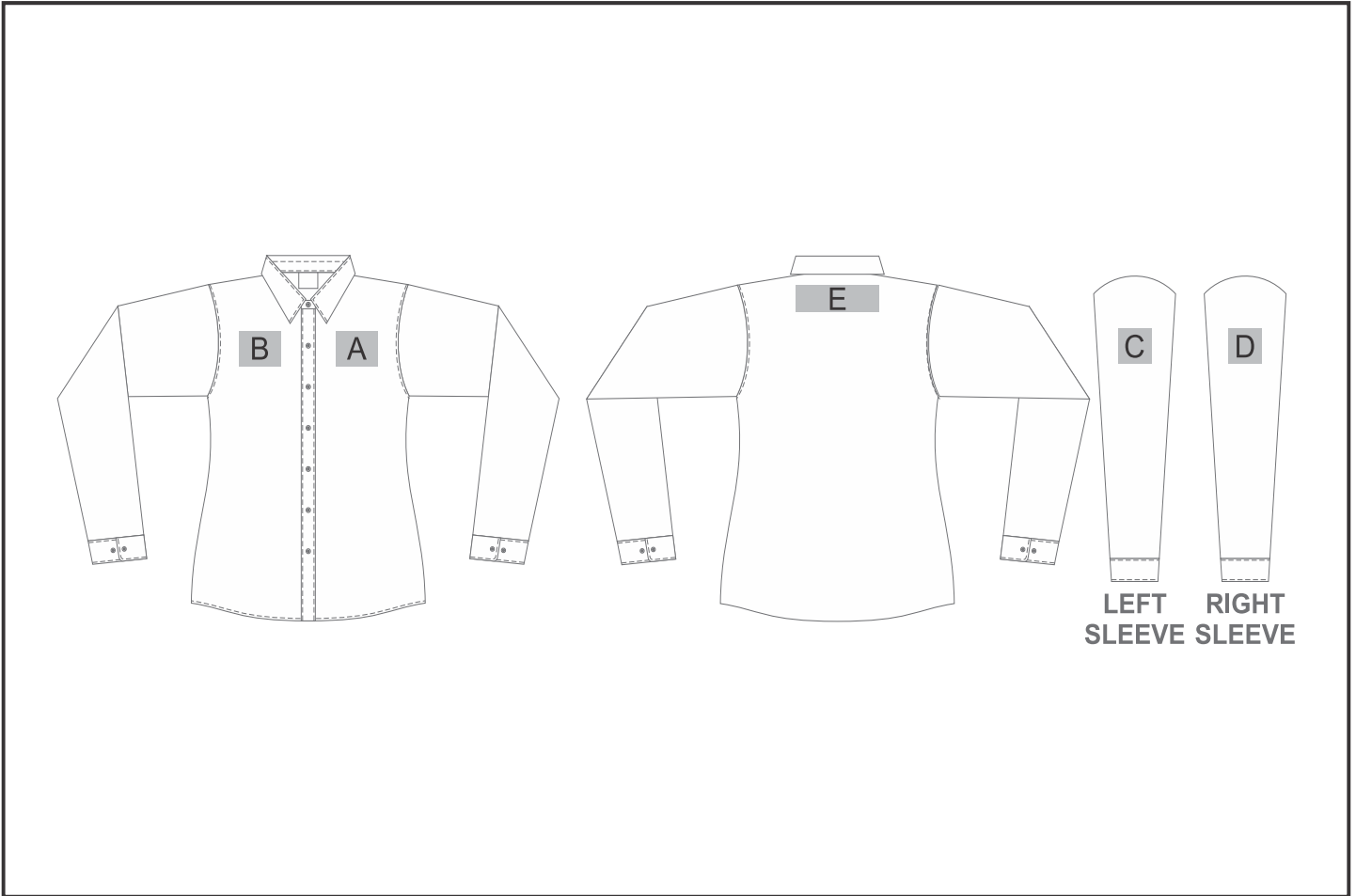


# CW-AL-182-A

## Ladies Long Sleeve Oxford Shirt



### Need to know:

Includes 1-Position Digital Transfer (setup fees apply)

- **DTC Inclusive Parameters:** Left/Right Chest or Back = 100mm x 100mm.

### Branding Options:

Position	Branding Method (Branding Code)	No. of Colours	Dimension
A	Digital Transfer Clothing A6 (DTC-A6)	Full Colour	80mm wide x 80mm high
A	Embroidery (EM-CLOTHING)	N/A	100mm wide x 80mm high
A	Screen Print (SP)	1 Colour	80mm wide x 80mm high
A	Silicone (STP-A)	N/A	30mm wide x 30mm high
A	Silicone (STP-B)	N/A	50mm wide x 50mm high
A	Silicone (STP-C)	N/A	80mm wide x 80mm high
B	Digital Transfer Clothing A6 (DTC-A6)	Full Colour	80mm wide x 80mm high

B	Embroidery (EM-CLOTHING)	N/A	100mm wide x 8mm high
B	Screen Print (SP)	1 Colour	80mm wide x 80mm high
B	Silicone (STP-A)	N/A	30mm wide x 30mm high
B	Silicone (STP-B)	N/A	50mm wide x 50mm high
B	Silicone (STP-C)	N/A	80mm wide x 80mm high

C	Digital Transfer Clothing A6 (DTC-A6)	Full Colour	80mm wide x 80mm high
C	Embroidery (EM-CLOTHING)	N/A	80mm wide x 60mm high
C	Screen Print (SP)	1 Colour	80mm wide x 80mm high
C	Silicone (STP-A)	N/A	30mm wide x 30mm high
C	Silicone (STP-B)	N/A	50mm wide x 50mm high
C	Silicone (STP-C)	N/A	80mm wide x 80mm high

D	Digital Transfer Clothing A6 (DTC-A6)	Full Colour	80mm wide x 80mm high
D	Embroidery (EM-CLOTHING)	N/A	80mm wide x 60mm high
D	Screen Print (SP)	1 Colour	80mm wide x 80mm high
D	Silicone (STP-A)	N/A	30mm wide x 30mm high
D	Silicone (STP-B)	N/A	50mm wide x 50mm high
D	Silicone (STP-C)	N/A	80mm wide x 80mm high

E	Digital Transfer Clothing A6 (DTC-A6)	Full Colour	148mm wide x 60mm high
E	Digital Transfer Clothing A5 (DTC-A5)	Full Colour	200mm wide x 60mm high
E	Embroidery (EM-CLOTHING)	N/A	200mm wide x 60mm high