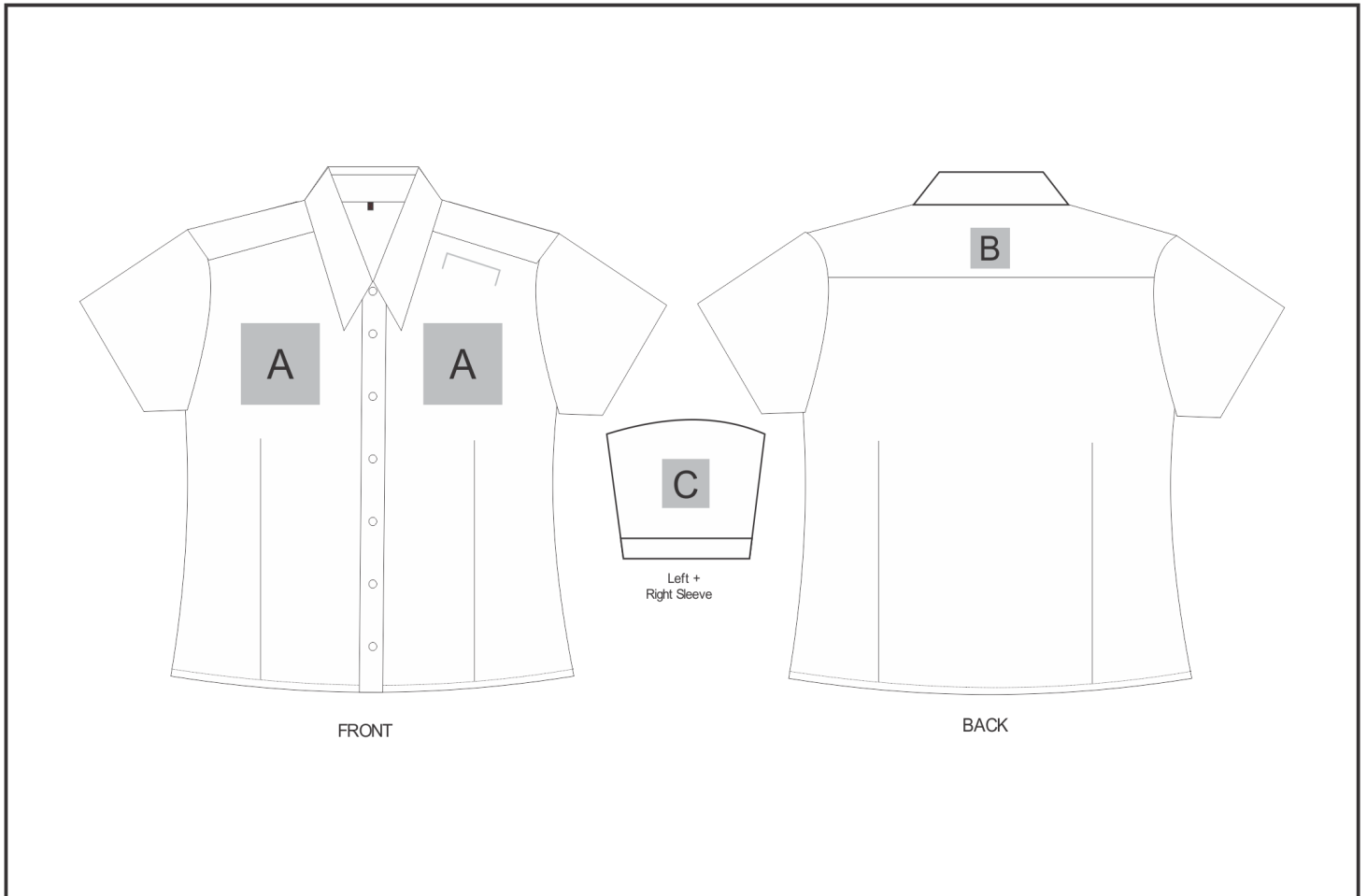


# BAS-7771

## Ladies Short Sleeve Milano Shirt



### Need to know:

- EMB/DTC inclusive parameters: Left/Right Chest OR Back = 100mm x 100mm
- Cannot guarantee a 100% straight branding on any clothing item with check or stripe detail.

### Branding Options:

Position	Branding Method (Branding Code)	No. of Colours	Dimension
A	Embroidery (EM-CLOTHING)	N/A	100mm wide x 100mm high
A	Digital Transfer Clothing A6 (DTC-A6)	Full Colour	100mm wide x 100mm high
A	Silicone (STP-A)	N/A	30mm wide x 30mm high
A	Silicone (STP-B)	N/A	50mm wide x 50mm high
A	Silicone (STP-C)	N/A	80mm wide x 80mm high
A	Silicone (STP-D)	N/A	100mm wide x 40mm high

B	Embroidery (EM-CLOTHING)	N/A	50mm wide x 50mm high
B	Digital Transfer Clothing A6 (DTC-A6)	Full Colour	50mm wide x 50mm high

B	Silicone (STP-A)	N/A	30mm wide x 30mm high
B	Silicone (STP-B)	N/A	50mm wide x 50mm high
C	Embroidery (EM-CLOTHING)	N/A	80mm wide x 80mm high
C	Digital Transfer Clothing A6 (DTC-A6)	Full Colour	80mm wide x 80mm high
C	Silicone (STP-A)	N/A	30mm wide x 30mm high
C	Silicone (STP-B)	N/A	50mm wide x 50mm high
C	Silicone (STP-C)	N/A	80mm wide x 80mm high